



Gastrostomy Tube Feeding

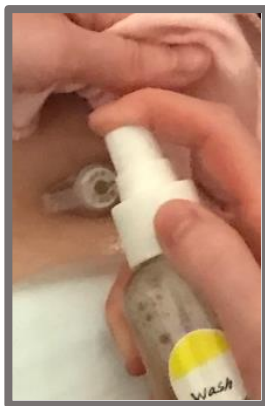
Stoma Site Care

Clean G-tube area EVERY TIME the gauze gets wet. This will prevent breakdown and irritation.

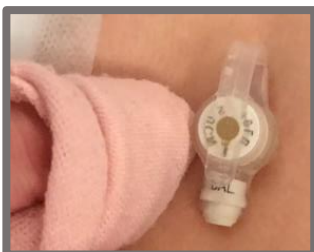
1. Remove old gauze either by ripping with hands or using wound care scissors.



2. Spray area with cleanser
(Johnson's baby shampoo and water mix)



3. Pat (do not rub) pat dry with a soft cloth



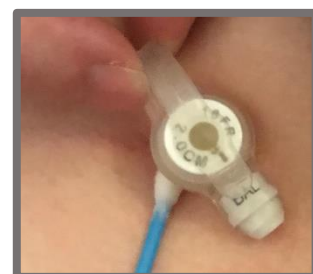
4. Spray area with water rinse



5. Pat (do not rub) pat dry with a soft cloth



6. Roll (do not rub) Roll Q-tip around and under button to make sure it's completely dry



ALWAYS CHECK WITH YOUR DOCTOR BEFORE MAKING ANY CHANGES.

7. Use the other end of the Q-tip (if it has not been used already during the drying process) otherwise use a new Q-tip to apply Desitin (creamy – blue tube) around and under G-tube button.

*** If the individual also uses Desitin for the perineal (peri) area (diaper/briefs area) use a separate container of Desitin for the G-tube button. It helps to label the container to make sure cross contamination does not occur.



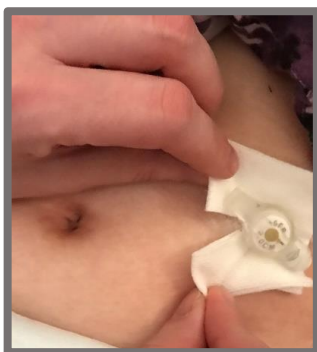
8. **REMEMBER THIS ROUTINE, ESPECIALLY THE FOLLOWING IS WHAT WE DO AS APPROVED BY OUR PEDIATRICIAN – YOU SHOULD ALWAYS CONSULT YOUR PEDIATRICIAN OR PCP BEFORE MAKING ANY CHANGES.**

IF THE AREA IS RED OR THERE IS DISCOLORED “GUNK” ON THE Q-TIP – SWITCH FROM DESITIN TO BACITRATION OR NEOSPORIN, IT SHOULD RESOLVE WITHIN 2-3 DAYS AT THE MOST.

HOWEVER, IF YOU FOLLOW THIS ROUTINE EVERY SINGLE TIME THE AREA GETS WET, THERE WILL MOST LIKELY NEVER BE ANOTHER IRRITATION.



9. Apply 1 (NOT 2) 2x2 split gauze around button.



10. Cross the end of the gauze as shown below.



11. Tape split area to itself then fold the excess tape under the gauze and press the tape firmly to make sure the tape is only on the fold of the gauze on both side. **(DO NOT TAPE THE GAUZE TO THE SKIN.)**



ALWAYS CHECK WITH YOUR DOCTOR BEFORE MAKING ANY CHANGES

CREATING YOUR STOMA SITE CARE KIT

Remove old gauze either by ripping with hands or using wound care scissors.



(2) **Travel spray bottles**
Label one "Cleanser"
Label other "Rinse"



Johnson's Baby Shampoo travel size
(along with a big bottle for restocking)

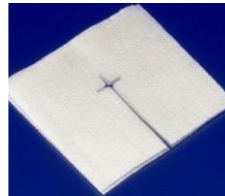


Use **ONLY** Johnsons Baby Shampoo
NOT Johnsons Shampoo & Body Wash

2x2 **split gauze** packets

To keep them from being all over the place you can put a rubber band around them or put them in a small bag

Q-tips travel size along with a big box for restocking



Desitin Original Creamy –Blue container
(we personally felt the purple container Desitin was difficult to remove)



Durapore tape
do not tape gauze to skin
cross the ends of the gauze



Wash cloths – (baby wash cloths are the softest) - or you can cut up **paper towels** to reduce laundry and put them in a sandwich bag. Remember do not rub – only pat dry.



Do not reuse this cloth –
wash before using again.



Travel bag to place the above contents. Personally, we keep a STOMA SITE CLEANING KIT in the go-bag, in the living room, in my child's bedroom, and one in the bathroom for after bathing. *The more accessible your kit, the more you will use it.*



Clean G-tube area **EVERY TIME** the gauze gets wet. This will prevent breakdown and irritation.

ALWAYS CHECK WITH YOUR DOCTOR BEFORE MAKING ANY CHANGES